

7

ORNITHOLOGY

## Chapter 7 - Ornithology

Figure 7.1 - Ornithology Viewpoint Coverage

Figure 7.2 - Locations of Curlew Observations in Year 1

Figure 7.3 - Locations of Curlew Observations in Year 2

Figure 7.4 - Locations of Breeding Birds

Figure 7.5 - Locations of Breeding Birds

Figure 7.6 - Hen Harrier Flight-lines

Figure 7.7 - Peregrine Flight-lines

Figure 7.8 - Flight-lines for Other Annex 1 Raptor Species

Figure 7.9 - Kestrel Flight-lines

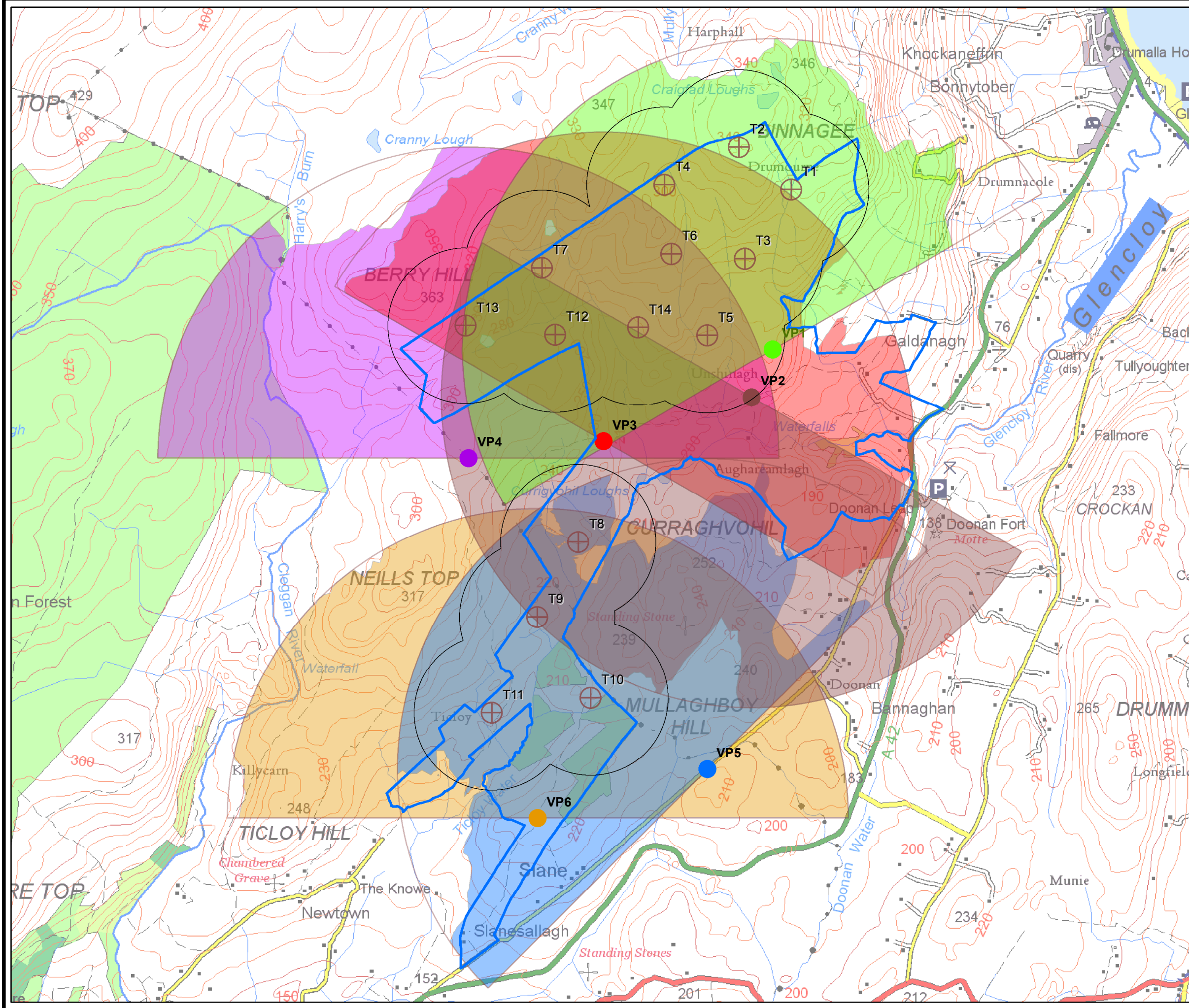
Figure 7.10 - Buzzard Flight-lines



# UNSHINAGH

## FIGURE 7.1

### ORNITHOLOGY VIEWPOINT COVERAGE



© CROWN COPYRIGHT, ALL RIGHTS RESERVED.  
2021 LICENCE NUMBER 242.

- Turbines
- 500m Turbine Buffer
- Site Boundary
- Viewpoint 1
- Viewpoint 2
- Viewpoint 3
- Viewpoint 4
- Viewpoint 5
- Viewpoint 6
- VP 2 km Extents
- VP1 only
- VP2 only
- VP3 only
- VP4 only
- VP5 only
- VP6 only
- VP1 and VP2
- VP1 and VP3
- VP2 and VP3
- VP2 and VP4
- VP2 and VP5
- VP2 and VP6
- VP3 and VP4
- VP5 and VP6
- VP1, VP2 and VP4
- VP1, VP3 and VP4
- VP2, VP3 and VP4
- VP2, VP3 and VP5
- VP2, VP5 and VP6
- VP1, VP2, VP3 and VP4



LAYOUT DWG: N/A      T-LAYOUT NO.: PNIRuns024

DRAWING NUMBER: **04291-RES-LAY-DR-TE-012**

SCALE - 1:24,000 @ A3

#### ENVIRONMENTAL STATEMENT & PLANNING APPLICATION 2021

THIS DRAWING IS THE PROPERTY OF RENEWABLE ENERGY SYSTEMS LTD. AND NO REPRODUCTION MAY BE MADE IN WHOLE OR IN PART WITHOUT PERMISSION

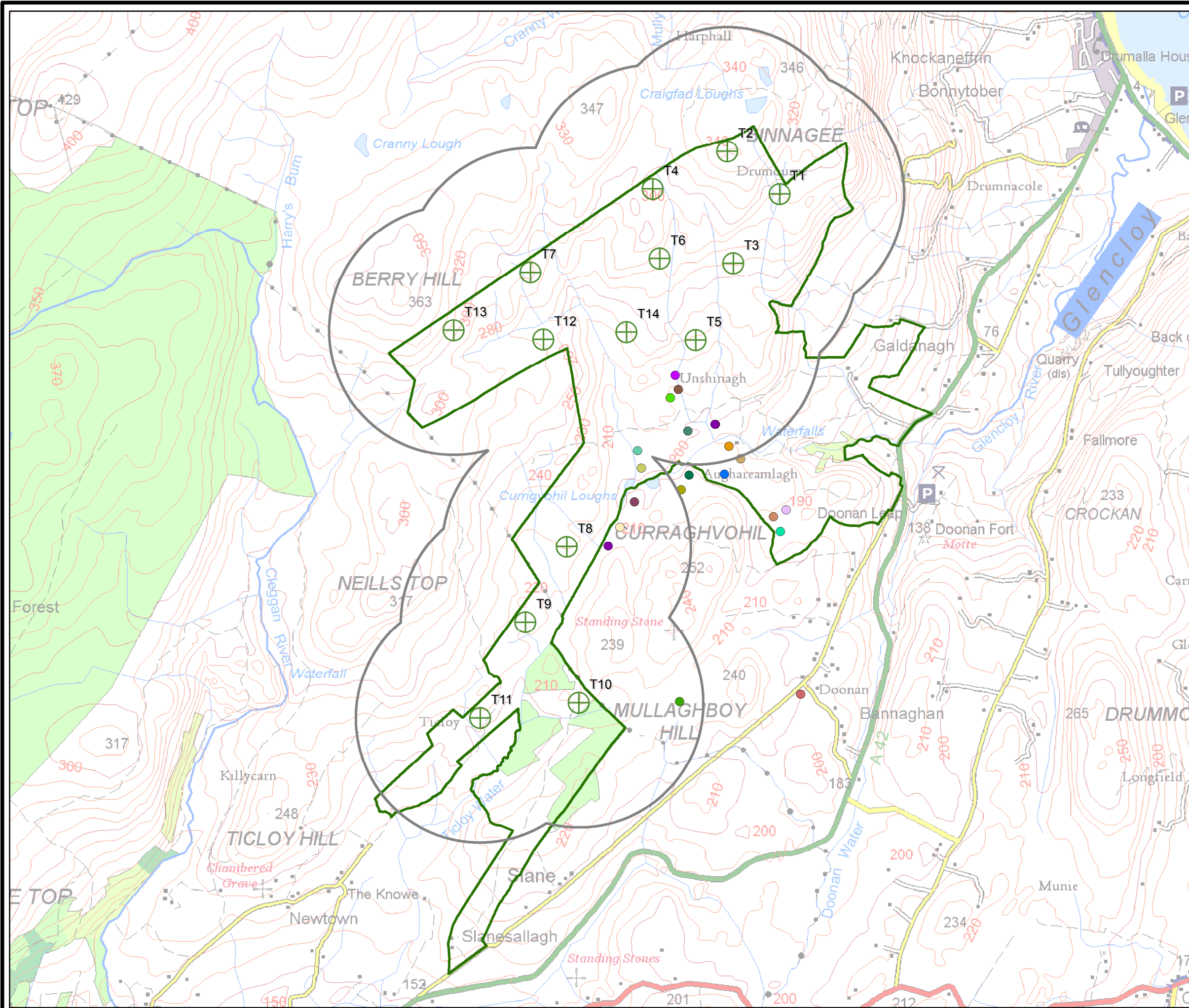


# UNSHINAGH

## FIGURE 7.2

### LOCATIONS OF CURLEW OBSERVATIONS IN YEAR 1

© CROWN COPYRIGHT, ALL RIGHTS RESERVED. 2021 LICENCE NUMBER 242.



- Turbines
- 800 m Turbine Buffer
- Site Boundary
- three curlews 010620
- single curlew 280520
- single curlew 280420
- single curlew 230320
- single curlew 200320
- single curlew 080420
- five curlews 160620
- five curlew 110320
- curlew pair 4 280520
- curlew pair 3 280520
- curlew pair 2 280520
- curlew pair 2 280420
- curlew pair 2 220420
- curlew pair 2 160320
- curlew pair 2 080420
- curlew pair 1 220420
- curlew pair 1 160320
- curlew pair 1 080420
- curlew pair 230320
- curlew pair 200320
- curlew pair 060420



LAYOUT DWG: N/A T-LAYOUT NO.: PNIRuns024

DRAWING NUMBER: **04291-RES-LAY-DR-TE-013**

SCALE - 1:24,000 @ A3

**ENVIRONMENTAL STATEMENT & PLANNING APPLICATION 2021**

THIS DRAWING IS THE PROPERTY OF RENEWABLE ENERGY SYSTEMS LTD. AND NO REPRODUCTION MAY BE MADE IN WHOLE OR IN PART WITHOUT PERMISSION

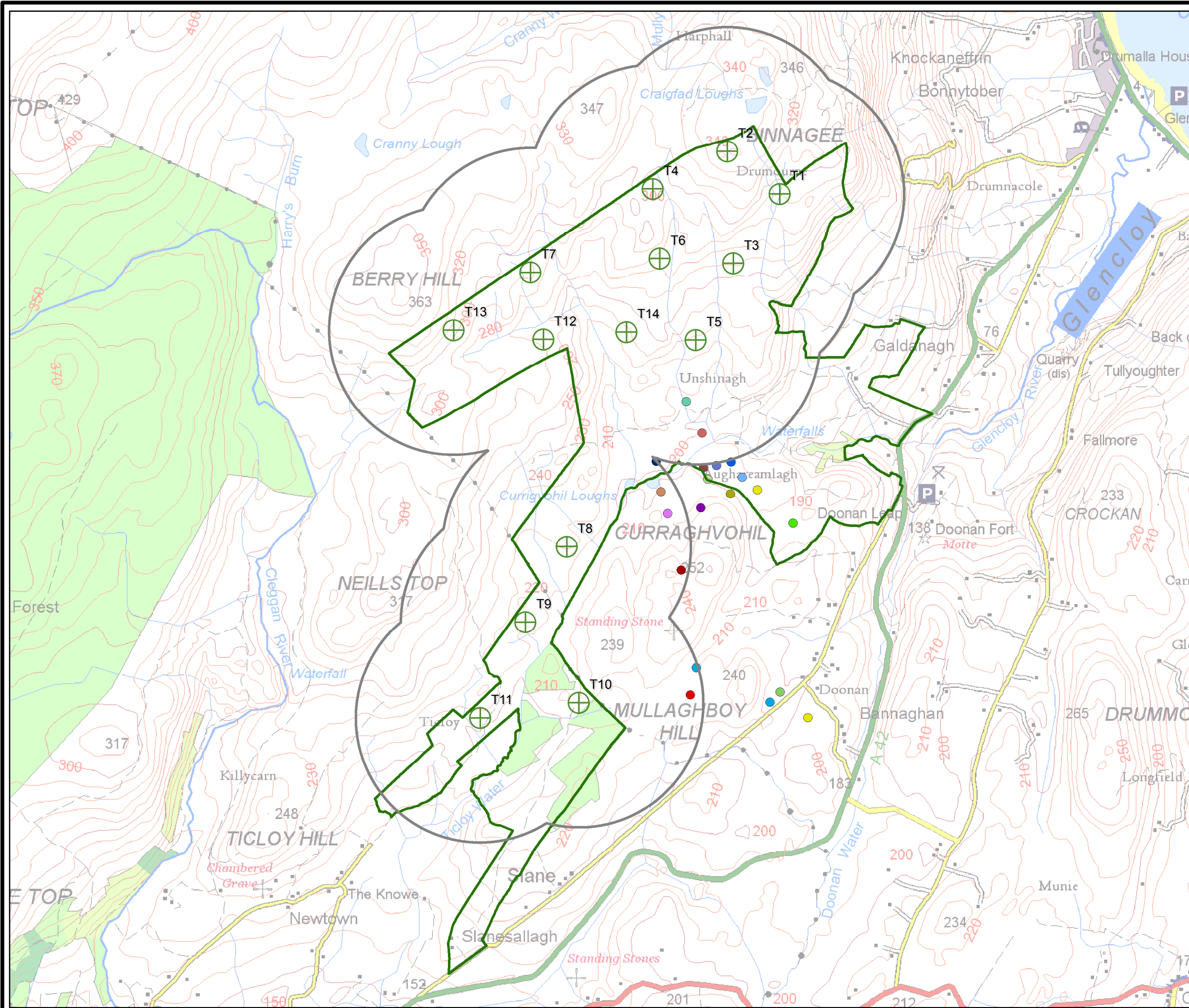


# UNSHINAGH

## FIGURE 7.3

### LOCATIONS OF CURLEW OBSERVATIONS IN YEAR 2

© CROWN COPYRIGHT, ALL RIGHTS RESERVED. 2021 LICENCE NUMBER 242.



- Turbines
- 800 m Turbine Buffer
- Site Boundary
- single curlew 290621
- single curlew 240621
- single curlew 070621
- single curlew 050721
- curlew pair 2 290421
- curlew pair 2 140521
- curlew pair 1 290421
- curlew pair 240621
- curlew pair 220521
- curlew pair 190621
- curlew pair 1 140521
- four curlews 170321
- curlew pair 4 030421
- curlew pair 3 030421
- curlew pair 2 030421
- curlew pair 1 030421
- curlew pair 260321
- curlew pair 240321
- curlew pair 170321



LAYOUT DWG: N/A T-LAYOUT NO.: PNIRuns024

DRAWING NUMBER: **04291-RES-LAY-DR-TE-014**

SCALE - 1:24,000 @ A3

**ENVIRONMENTAL STATEMENT & PLANNING APPLICATION 2021**

THIS DRAWING IS THE PROPERTY OF RENEWABLE ENERGY SYSTEMS LTD. AND NO REPRODUCTION MAY BE MADE IN WHOLE OR IN PART WITHOUT PERMISSION



# UNSHINAGH

## FIGURE 7.4 LOCATIONS OF BREEDING BIRDS

© CROWN COPYRIGHT, ALL RIGHTS RESERVED.  
2021 LICENCE NUMBER 242.

- Turbines
- 500 m Turbine Buffer
- Site Boundary
- snipe territories *both baseline years*
- red grouse *30th Apr 2021*
- loughs *location 1*
- loughs *location 2*



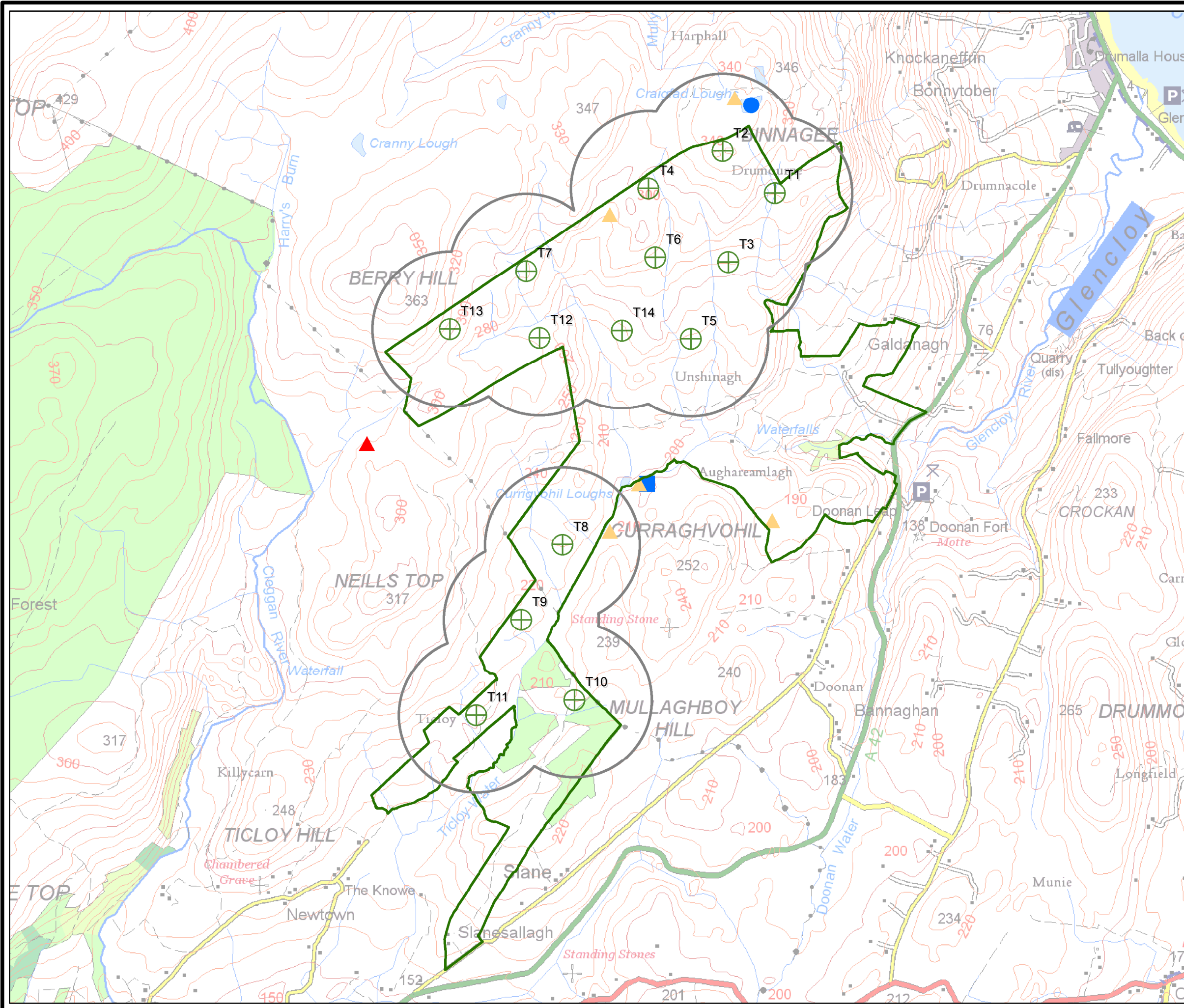
LAYOUT DWG: N/A      T-LAYOUT NO.: PNIRuns024

DRAWING NUMBER  
**04291-RES-LAY-DR-TE-015**

SCALE - 1:24,000 @ A3

**ENVIRONMENTAL STATEMENT &  
PLANNING APPLICATION 2021**

THIS DRAWING IS THE PROPERTY OF RENEWABLE ENERGY SYSTEMS LTD. AND NO REPRODUCTION MAY BE MADE IN WHOLE OR IN PART WITHOUT PERMISSION





# UNSHINAGH

## FIGURE 7.5 LOCATIONS OF BREEDING BIRDS

© CROWN COPYRIGHT, ALL RIGHTS RESERVED.  
2021 LICENCE NUMBER 242.

- Turbines
- 500 m Turbine Buffer
- Site Boundary
- skylark territories
- meadow pipit territories
- wheatear territories
- stonechat territories
- reed bunting territories

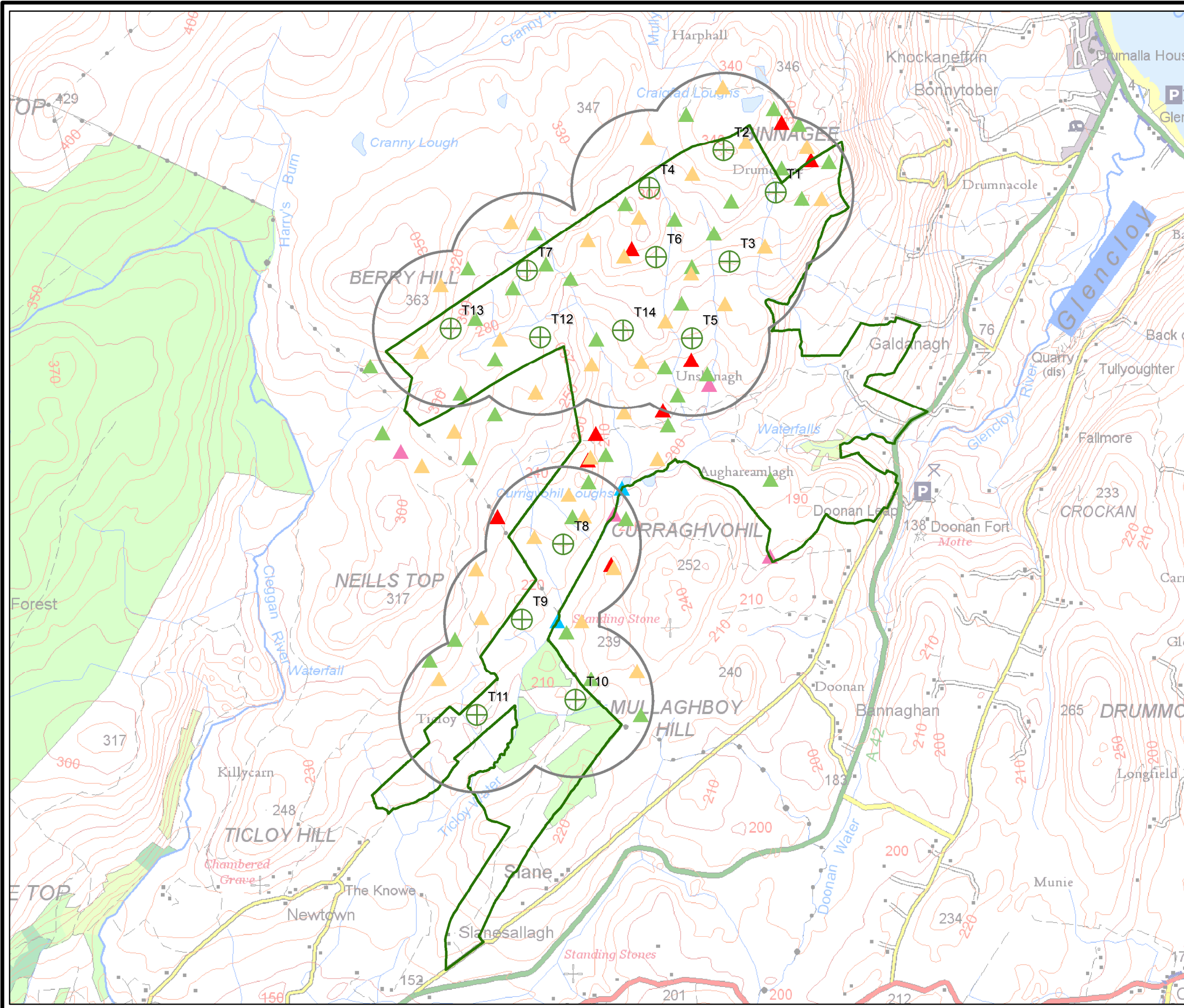


LAYOUT DWG N/A T-LAYOUT NO. PNIRuns024  
DRAWING NUMBER  
**04291-RES-LAY-DR-TE-016**

SCALE - 1:24,000 @ A3

**ENVIRONMENTAL STATEMENT &  
PLANNING APPLICATION 2021**

THIS DRAWING IS THE PROPERTY OF RENEWABLE ENERGY  
SYSTEMS LTD. AND NO REPRODUCTION MAY BE MADE IN  
WHOLE OR IN PART WITHOUT PERMISSION








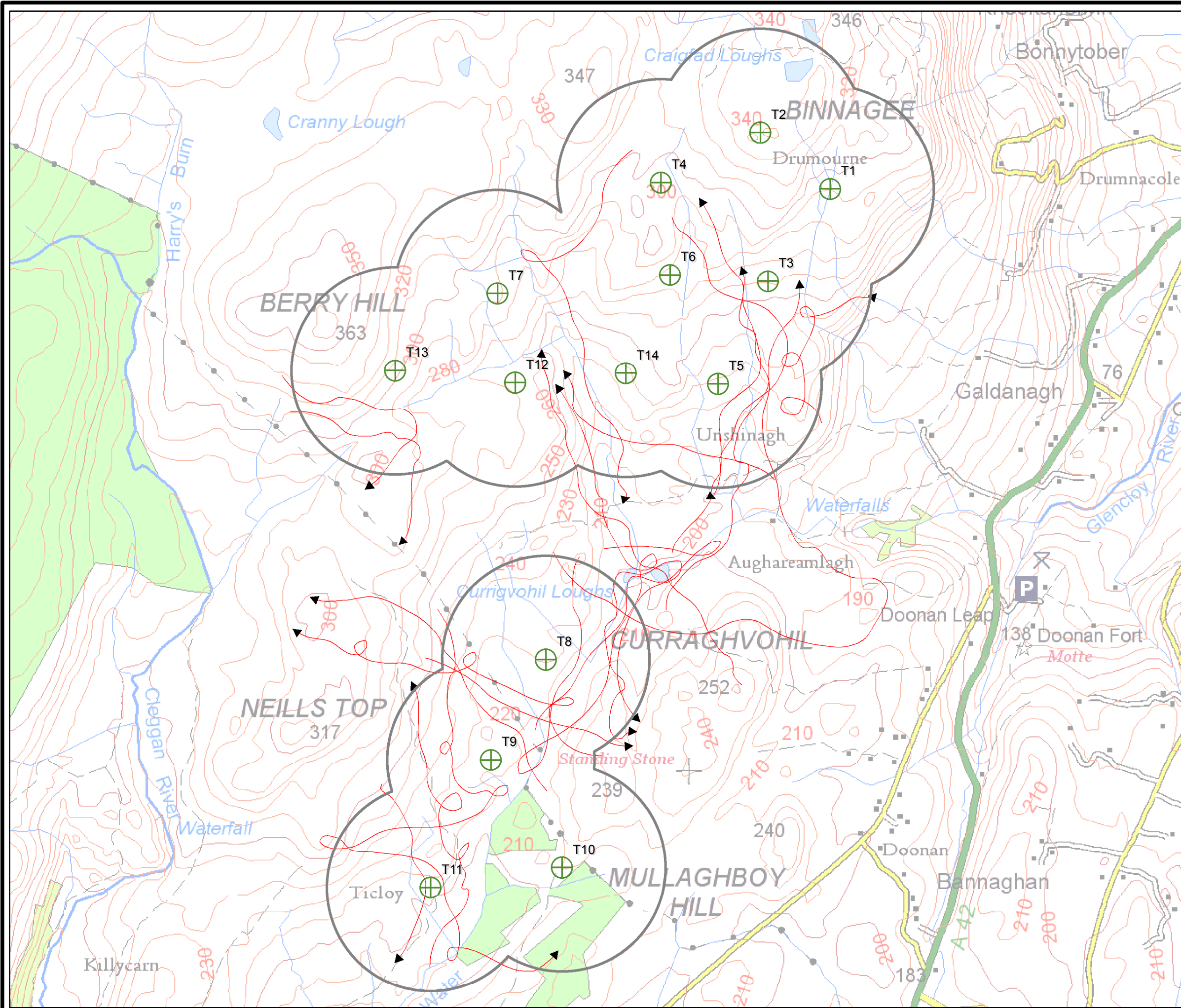
# UNSHINAGH

## FIGURE 7.6

### HEN HARRIER FLIGHTLINES

© CROWN COPYRIGHT, ALL RIGHTS RESERVED.  
2021 LICENCE NUMBER 242.

-  Turbines
-  500 m Turbine Buffer
-  hen harrier flightlines



LAYOUT DWG: N/A | T-LAYOUT NO.: PNIRuns024

DRAWING NUMBER: **04291-RES-LAY-DR-TE-017**

SCALE - 1:18,000 @ A3

**ENVIRONMENTAL STATEMENT & PLANNING APPLICATION 2021**

THIS DRAWING IS THE PROPERTY OF RENEWABLE ENERGY SYSTEMS LTD. AND NO REPRODUCTION MAY BE MADE IN WHOLE OR IN PART WITHOUT PERMISSION





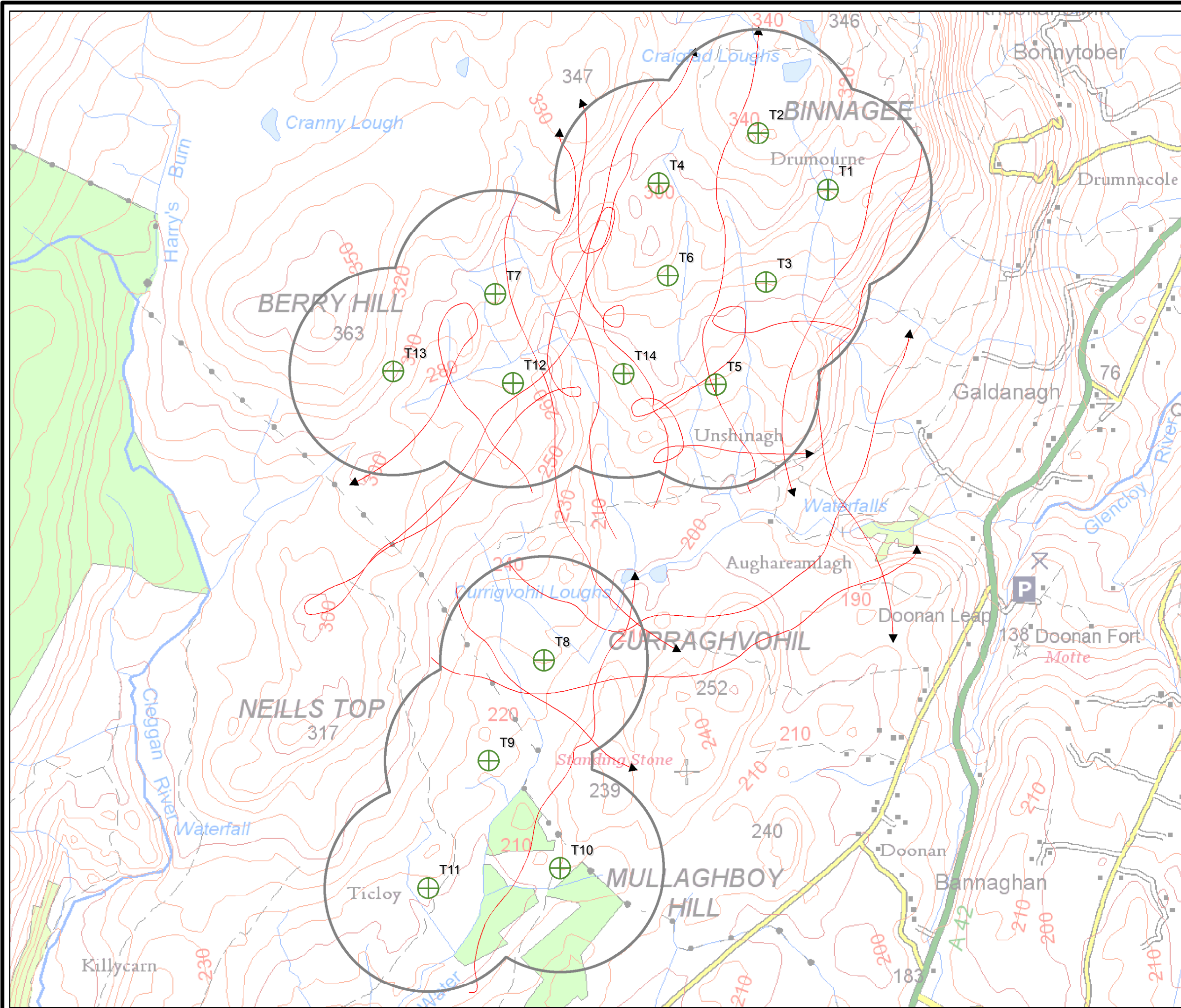
# UNSHINAGH

## FIGURE 7.7

### PEREGRINE FLIGHTLINES

© CROWN COPYRIGHT, ALL RIGHTS RESERVED.  
2021 LICENCE NUMBER 242.

- Turbines
- 500 m Turbine Buffer
- peregrine flightlines



LAYOUT DWG: N/A | T-LAYOUT NO.: PNIRuns024

DRAWING NUMBER: **04291-RES-LAY-DR-TE-018**

SCALE - 1:18,000 @ A3

**ENVIRONMENTAL STATEMENT & PLANNING APPLICATION 2021**

THIS DRAWING IS THE PROPERTY OF RENEWABLE ENERGY SYSTEMS LTD. AND NO REPRODUCTION MAY BE MADE IN WHOLE OR IN PART WITHOUT PERMISSION



# UNSHINAGH

## FIGURE 7.8

### FLIGHTLINES FOR OTHER ANNEX 1 RAPTOR

© CROWN COPYRIGHT, ALL RIGHTS RESERVED.  
2021 LICENCE NUMBER 242.

- Turbines
- 500 m Turbine Buffer
- red kite flightline 03 Apr 2021
- red kite flightline 07 Jul 2021
- golden eagle flightline 27 Jan 2020
- golden eagle flightline 23 Nov 2020
- golden eagle flightline 23 Nov 2020
- white-tailed eagle observation (perched on ground)



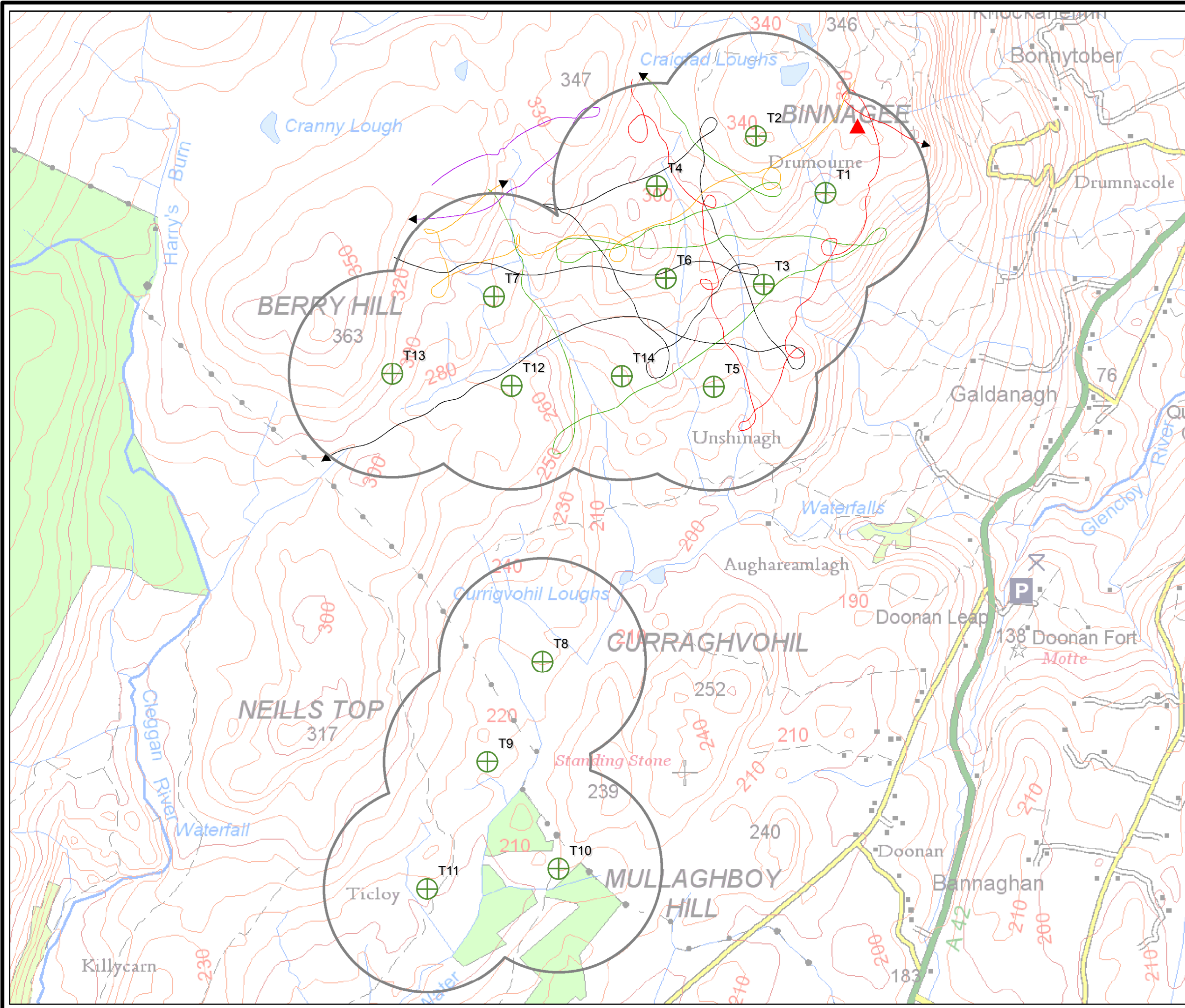
LAYOUT DWG: N/A      T-LAYOUT NO.: PNIRuns024

DRAWING NUMBER  
**04291-RES-LAY-DR-TE-019**

SCALE - 1:18,000 @ A3

**ENVIRONMENTAL STATEMENT & PLANNING APPLICATION 2021**

THIS DRAWING IS THE PROPERTY OF RENEWABLE ENERGY SYSTEMS LTD. AND NO REPRODUCTION MAY BE MADE IN WHOLE OR IN PART WITHOUT PERMISSION





# UNSHINAGH

## FIGURE 7.9

### KESTREL FLIGHTLINES

© CROWN COPYRIGHT, ALL RIGHTS RESERVED.  
2021 LICENCE NUMBER 242.

- Turbines
- 500 m Turbine Buffer
- kestrel flightlines (baseline year 2)
- kestrel flightlines (baseline year 1)



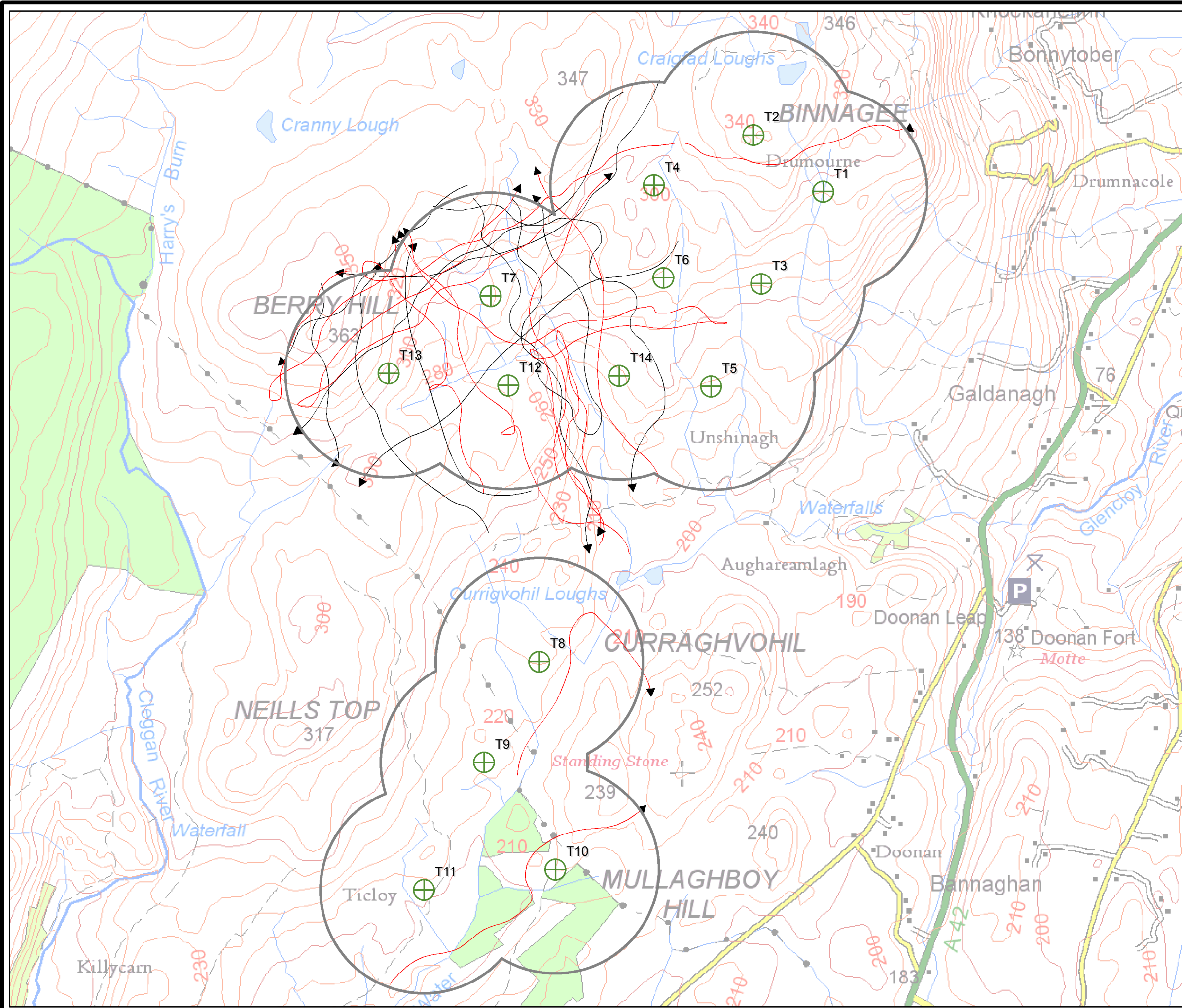
LAYOUT DWG: N/A | T-LAYOUT NO.: PNIRuns024

DRAWING NUMBER: **04291-RES-LAY-DR-TE-020**

SCALE - 1:18,000 @ A3

**ENVIRONMENTAL STATEMENT & PLANNING APPLICATION 2021**

THIS DRAWING IS THE PROPERTY OF RENEWABLE ENERGY SYSTEMS LTD. AND NO REPRODUCTION MAY BE MADE IN WHOLE OR IN PART WITHOUT PERMISSION



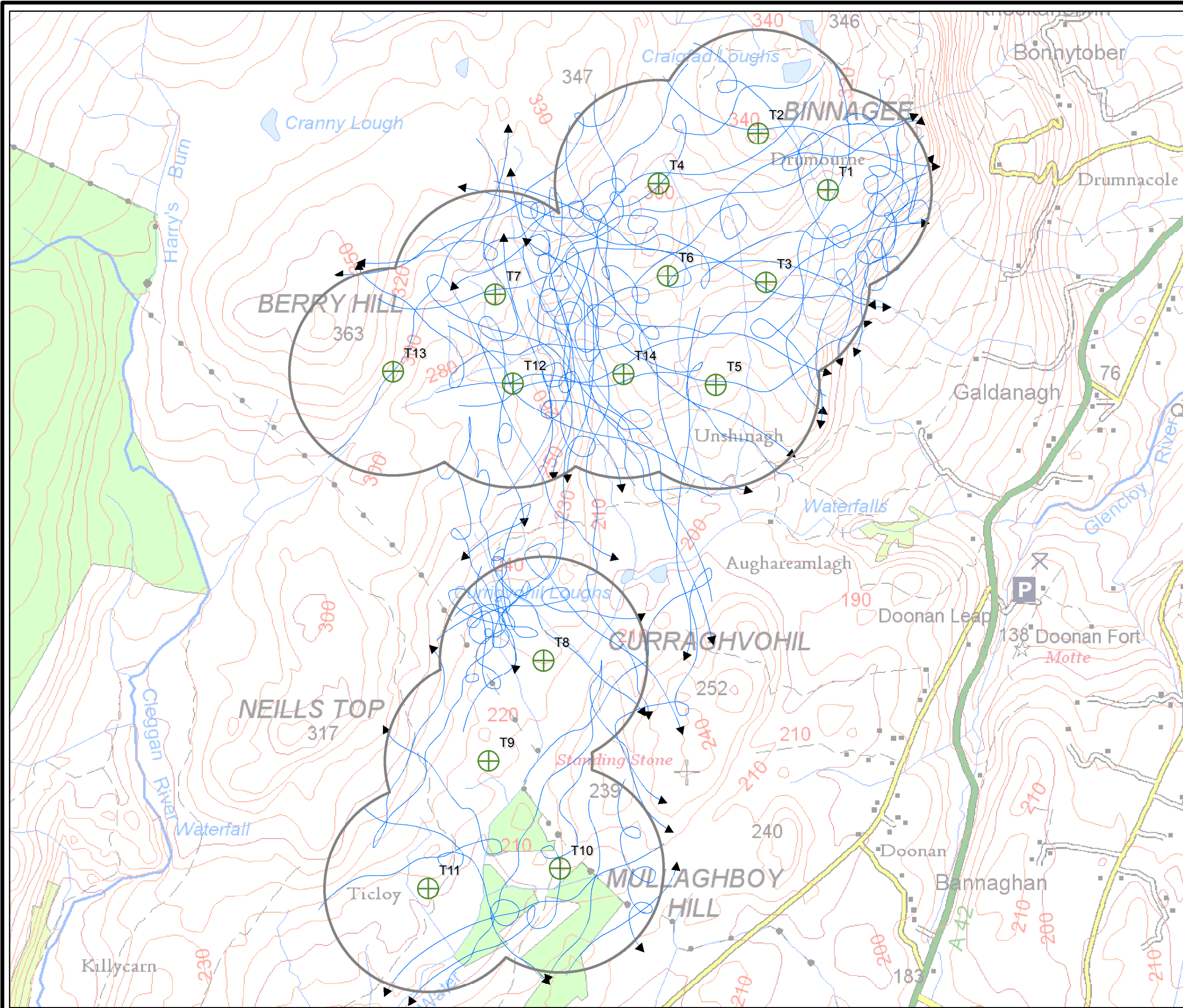


# UNSHINAGH

## FIGURE 7.10 BUZZARD FLIGHTLINES

© CROWN COPYRIGHT, ALL RIGHTS RESERVED.  
2021 LICENCE NUMBER 242.

- Turbines
- 500 m Turbine Buffer
- buzzard flightlines (baseline year 2 only)



LAYOUT DWG: N/A | T-LAYOUT NO.: PNIRuns024

DRAWING NUMBER  
**04291-RES-LAY-DR-TE-021**

SCALE - 1:18,000 @ A3

**ENVIRONMENTAL STATEMENT &  
PLANNING APPLICATION 2021**

THIS DRAWING IS THE PROPERTY OF RENEWABLE ENERGY  
SYSTEMS LTD. AND NO REPRODUCTION MAY BE MADE IN  
WHOLE OR IN PART WITHOUT PERMISSION