



### UNSHINAGH WIND FARM

### ZONE OF THEORETICAL VISIBILITY, 15 km RADIUS, BLADE TIP HEIGHT

#### KEY

Unshinagh proposed turbines

LVIA Viewpoint locations (see Figure 4.3 for more detail)

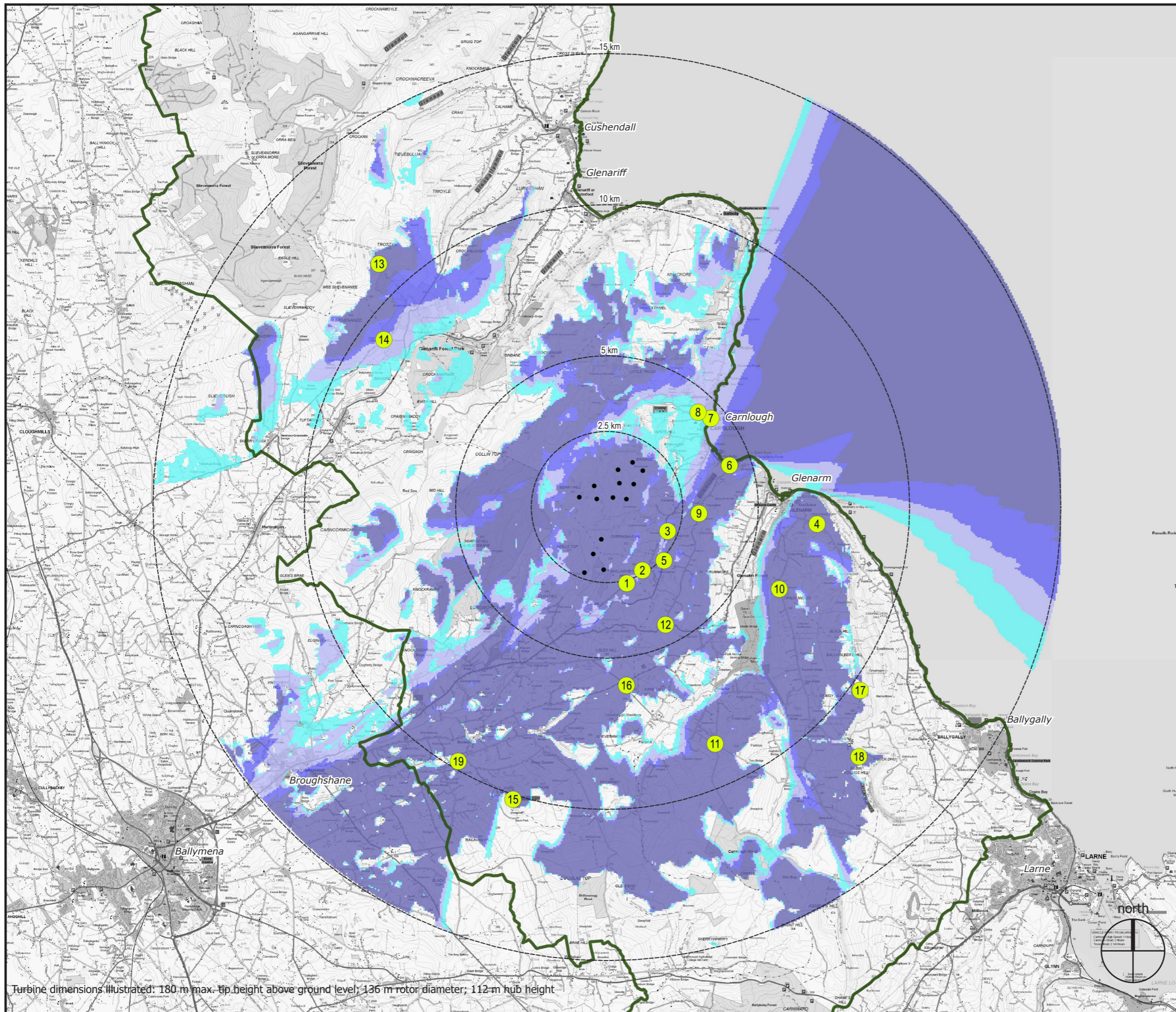
Zone of Theoretical Visibility of:

- 1 - 3 turbines across 6.59 % of Study Area
- 4 - 7 turbines across 6.51 % of Study Area
- 8 - 10 turbines across 5.80 % of Study Area
- 11 - 14 turbines across 34.94 % of Study Area

Total area with theoretical visibility of at least 1 blade tip: 53.84 %

Areas with no visibility are unshaded: 46.16 %

Antrim Coast and Glens Area of Outstanding Natural Beauty



Turbine dimensions illustrated: 180 m max. tip height above ground level; 136 m rotor diameter; 112 m hub height

Shanti McAllister  
landscape planning  
and design ltd.

#### LANDSCAPE AND VISUAL IMPACT ASSESSMENT

|                                  |                    |                                       |                |
|----------------------------------|--------------------|---------------------------------------|----------------|
| DRAWN / APPROVED:<br>SMc / JMc   | DATE:<br>Nov. 2021 | SCALE & PRINT SIZE:<br>1:125,000 @ A3 | REVISION:<br>A |
| TURBINE LAYOUT NO:<br>pNIRuns024 |                    | 0 5km                                 |                |

THIS DRAWING IS THE PROPERTY OF RENEWABLE ENERGY SYSTEMS LTD. AND NO REPRODUCTION MAY BE MADE IN WHOLE OR IN PART WITHOUT PERMISSION